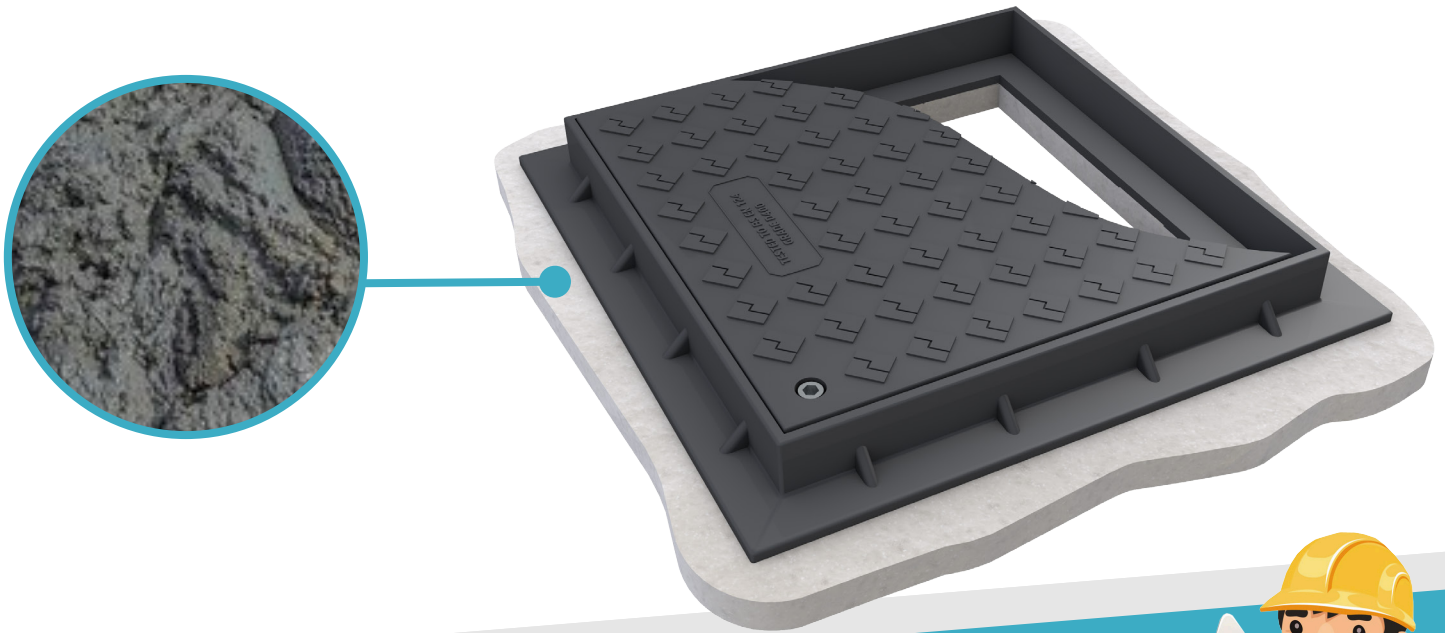


## IRONWORK BEDDING MORTAR



Ideally suited for the bedding and raising of manhole frames, fixing of street furniture and as a general purpose rapid setting repair mortar.

- ✓ Rapid setting characteristics.
- ✓ Low water/cement ratio.
- ✓ Shrinkage compensated.
- ✓ Excellent adhesion to dense concrete and steel.
- ✓ Simple to use, only requires the addition of clean water.
- ✓ Excellent workability and finishing properties.
- ✓ May be used down to 0°C, resistant to freeze/thaw cycle.
- ✓ Free from chloride additives.
- ✓ Low chromate (Cr (VI) < 2ppm).
- ✓ Manufactured under BSI QA Scheme, ISO 9001, EN2900.
- ✓ Complies with HD27/04 Chapter 3 part 1.
- ✓ **CE**, BSEN 1504-3, 0086-CPD-594215



### Assistance

Complete your job with confidence with help from our experts  
**01234 567 891**

### Set time



**PDS**

PIPELINE & DRAINAGE SYSTEMS LTD

Head Office, 361-365 Coleford Road, Darnall, Sheffield, S9 5NF, UK.

**25kg**